

# DOBERMANN PRO MAX



**BRIGHTNESS**

**3000 lm**

**DISTANCE**

**460 m**

**RUNTIME**

**10 days**

ON 1 BATTERY CHARGE

**LIGHT**



WHITE

**RECHARGEABLE**

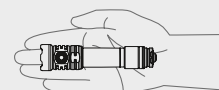
Magnetic USB charger and battery included

**DIMENSIONS**

Length 153 mm

Head diameter 34.5 mm

Weight with battery 203 g



## Flagship product of the Dobermann series

More than 15 years of experience and development allow us to create the most astonishing beam of light for a tactical flashlight that greatly exceeds others.

Dobermann Pro Max is a tactical flashlight in a compact body with the possibility of everyday use. The model has impressive light characteristics for its size, and a beam with a distinct central spot highlights objects located at a considerable distance. The presence of two operation buttons provides quick access to the necessary modes when using the flashlight as a hand-held one. Dobermann Pro Max is also compatible with

a new magnetic remote switch and original mounts for use as a mounted light. The model works not only on the included power supply, but also on any standard 21700 Li-Ion battery, as well as, thanks to the adapter, on an 18650 Li-Ion battery or two CR123A lithium batteries. The variability of the power supplies makes it possible to significantly increase the operating time.

## 2 in 1



### 1 TACTICAL LIGHT

Withstands recoil due to improved springs. Standard 1 inch body is compatible with tactical accessories.



### 2 EVERY DAY CARRY LIGHT

Compact body, convenient holster, steel clip and lanyard for day-to-day carry and use.



- **Pro Max** New generation electronics provides impressive throw distance of 460 meters and light output of 3000 lumens. Constant brightness even at low ambient temperatures and not fully charged battery.
- **Pro Max** Two buttons: tail tactical button for switching the flashlight on/off and side button for one-hand mode changing.



- **Pro Max** Adjustable operation for quick access to the required modes.
- **Pro Max** Direct access to Strobe mode while holding the flashlight with one hand.



- Distinct hotspot for directed aim illumination.
- Special precisely calculated reflector for High Intensity LED modification creates distinct central spot. Hotspot diameter is 15 meters at 100 meters distance.





- Thought-out head design for better heat dissipation.
- Noiseless two-phase electronic tactical button.
- Non-flat tactical button allows to easily switch the flashlight with a palm.



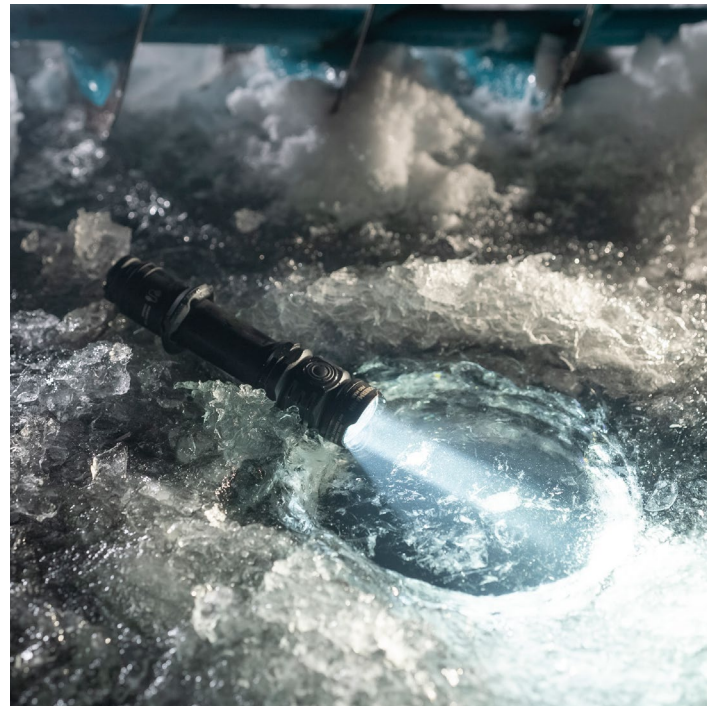
- The use of two reinforced springs in the design of the flashlight for better protection of the battery and the driver.
- Solid body made from aircraft-grade aluminium, special matt anti-abrasive finish without rough knurling.



- Steel striking bezel with matt non-reflective black titanium coating, which prevents location disclosure, is used for additional protection of the optical system in the event of a fall and as a shock-crushing tool.



- Innovative technology allows using any standard 21700 Li-Ion or 18650 Li-Ion battery. Full protection against short circuit even in case of contact between magnetic connector and metal objects.
- Intelligent algorithm for ultrafast charging.



- Active real-time temperature control to prevent overheating above +58 °C and warning indication of low battery level.
- Total protection from water, dirt and dust in accordance with IP68 standard — flashlight continues to work even after submersion at 25 meters depth. Withstands fallings from the 10th floor.

- 21700 Li-Ion battery in the set, also compatible with 18650 Li-Ion battery or 2xCR123A batteries.
- Possibility to work together with an external power source when 21700 Li-Ion or 18650 Li-Ion battery with adapter is installed in the flashlight (not with 2xCR123A).

# DOBERMANN PRO MAX FEATURES



## MAGNETIC USB CHARGER

Robust and water resistant magnetic connector

**Updated optical system:** High Intensity LED in combination with special reflector creates distinct central spot

**Thought-out head design:** new design for better heat dissipation

**Updated electronics:** prolonged runtimes at high brightness

**Convenient operation:** separate side button with soft pressing for switching between the modes, tactical button for turning the flashlight on and off, as well as for quick access to Strobe mode

**Electronic tactical button:** noiseless electronic button prevents location disclosure when hunting or during special operations, 20 times more durable than mechanical one

**Advanced active real-time temperature control:** ensures safe and comfortable use. When the temperature becomes close to +58 °C, the brightness decreases, which allows avoiding flashlight and battery overheating, as well as LED degradation. Compliant with European safety standards

**Improved springs:** new springs for better protection of the battery and driver and increased performance efficiency

**Steel striking bezel:** for additional protection of the optical system in the event of a fall and for self-defence

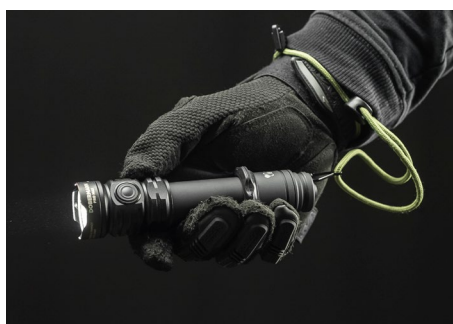
**Compatibility with batteries of various types and sizes:** the flashlight works on one standard 21700 Li-Ion or 18650 Li-Ion battery, as well as on two CR123A lithium batteries

**Ready-to-use solution:** 21700 Li-Ion 5000 mAh battery, battery adapter for use of 18650 Li-Ion battery or CR123A batteries, fast magnetic USB charger included

**Compatibility with magnetic remote switch:** optional magnetic remote switch for momentary on (only when the button is pressed) and for constant light. Easy one-motion connection, no need to unscrew the tailcap

**Fast magnetic charger:** the included 21700 Li-Ion 5000 mAh battery is charged in

 **2 h 45 min**



## WELL-THOUGHT-OUT SET OF ACCESSORIES

Injury-safe ergonomic silicone grip for convenient tactical hold.

Steel clip with wear-resistant black titanium coating for mounting on clothes, equipment or belt.

Nylon holster with several fixing options: on a belt of any width, on a MOLLE mount, on equipment thanks to durable steel ring.

Size-adjustable wrist lanyard made of heavy-duty paracord with steel carabiner for quick removal and installation on the flashlight.



## BOX FOR STORAGE

Waterproof (IP66) and impact-resistant plastic box for storage and transportation.

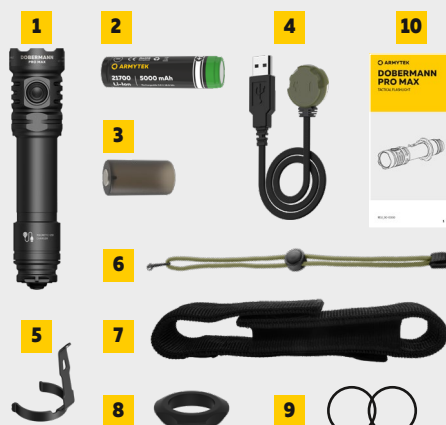
Several attachment points and additional suspension with metal carabiner for securing to belt, tactical vest or gear.



The structure is reinforced with additional stiffening ribs.

## SET DESCRIPTION

- 1 - flashlight
- 2 - 21700 Li-Ion 5000 mAh battery
- 3 - battery adapter
- 4 - magnetic USB charger
- 5 - steel clip
- 6 - paracord wrist lanyard
- 7 - nylon holster
- 8 - silicone grip
- 9 - 2 spare O-rings
- 10 - user manual in eight languages



## SPECIFICATIONS

Dobermann Pro Max		
Optics	Reflector	
Light output	3000 lm	
Beam distance	460 m	
Hotspot: Spill	9°:72°	
Brightness stabilization type	Full	
Number of modes	5	
Modes / Runtimes	Turbo Main2 Main1 Firefly Strobe	3000 lm / 2 h 10 min (870 lm after 1 min) 665 lm / 3 h 25 min (235 lm after 3 h 10 min) 235 lm / 12 h 9 lm / 10 d 3000 lm / 15 Hz / 4 h 10 min (870 lm after 2 min)
Power source	1x21700 Li-Ion, 1x18650 Li-Ion, 2xCR123A	
Length / head diameter / body diameter	153 mm / 34.5 mm / 25.4 mm	
Weight without / with battery	133 g / 203 g	
Ingress protection, Submersion and Impact resistance	IP68. Depth up to 25 m for 5 h. Height up to 25 m	

- All the above specifications are test results based on ANSI/PLATO FL 1-2019 Standard using the battery in the set. The data may vary due to environment, heat dissipation and other factors.
- The product images shown are for illustrative purposes only.

# BENEFITS OF WORKING WITH ARMYTEK

Armytek is a world famous manufacturer of high-tech flashlights, chargers and accessories. All Armytek products perfectly meet the buyer's requirements. We focus on quality and reliability: smart lineup allows us to thoroughly think through every detail before launching mass production.

## **HIGH PROFIT**

Favorable conditions and flexible prices for bulk orders are ensured by own factories in China.

## **FAST SHIPPING**

Warehouses around the world: the goods are always in stock and ready for shipment. Reduced costs and time of delivery, no additional customs fees required. Lower costs on shippings directly from the factories.

## **EXCEPTIONAL RELIABILITY**

Minimum returns rate – less than 1% (competitors' rate is 5-7%). All products go through quality checking on test stands.

## **LEGENDARY SERVICE**

Full support and cooperation: from placing an order to warranty service. Professional issue management, fast repairs and exchange.

## **NO HASSLE WARRANTY**

Up to 10 years unprecedented warranty.

## **OWN FACTORIES**

Every step of the process is controlled by our European specialists at the factories.

## **DEVELOPMENT**

Head office in Europe. Team of highly qualified specialists from defence, aviation, space and other specialized industries.

## **EXPERIENCE**

Expert in the fields of mechanics, optics and electronics. We specialize in development and manufacturing of flashlights and battery chargers since 2009.

## **COMPONENTS**

Components by world's leading manufacturers. Powerful LEDs, innovative electronics, aircraft-grade aluminium, tempered glass, etc.

## **SMART LINEUP**

Simple process of choosing a product, no bulky catalogs with a lot of similar variants. Only best models for client's needs.

## **NEW PRODUCTS**

Armytek produces innovative and the most technically advanced products in the world.

## **PRIVATE LABEL, OEM/ODM**

Creating new products, modifying our production models and personalizing them according to your needs.

## **MARKETING SUPPORT**

We provide all the necessary promotional materials: leaflets, booklets, catalogs, etc.

## **CLIENTS' NEEDS RESEARCH**

We systematically gather feedback to make sure that our products completely fit clients' needs and requirements.

**Built to  
exceed**